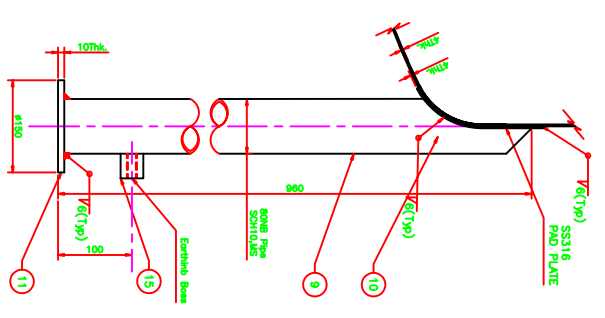
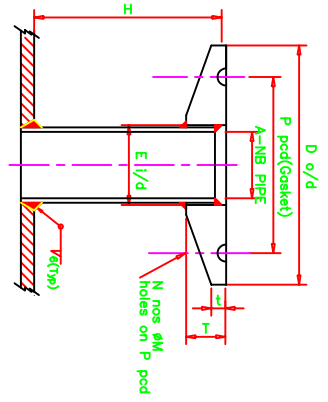
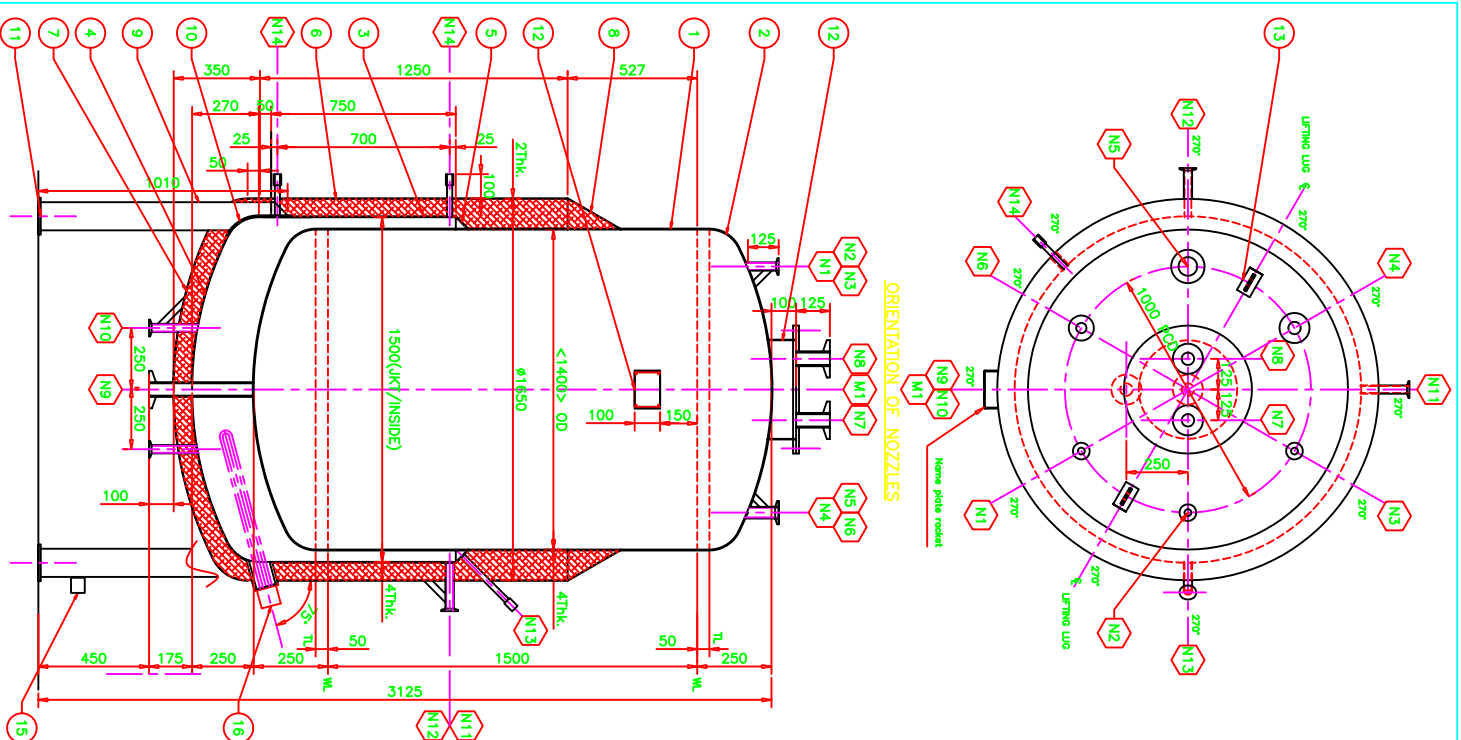
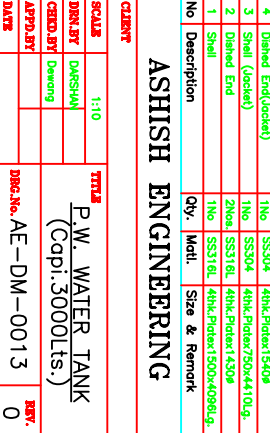
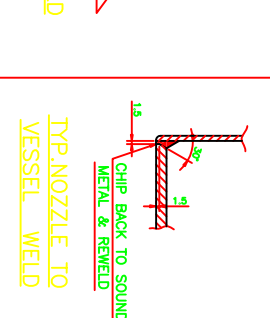
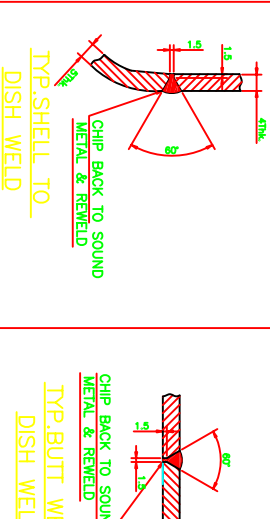
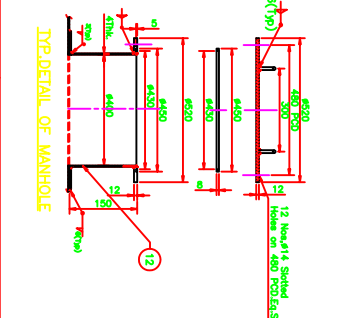
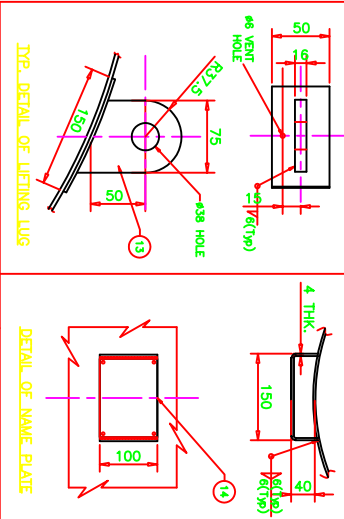


### NOZZLE SCHEDULE

W/O	SIZE	SERVICE	TYPE	SCM	PROU.	REMARKS
M1	40NB	MANHOLE	TRICLOVER	40	100	Ref Detail
N1	25NB	INLET	TRICLOVER	40	125	
N2	50NB	INLET	TRICLOVER	40	125	
N3	40NB	SPARE	TRICLOVER	40	125	
N4	50NB	VENT	TRICLOVER	40	125	
N5	75NB	LEVEL SWITCH	TRICLOVER	40	125	
N6	40NB	SPARE	TRICLOVER	40	125	
N7	50NB	RETURN LINE	TRICLOVER	40	125	
N8	50NB	RETURN LINE	TRICLOVER	40	125	
N9	50NB	BOTTOM OUTLET	TRICLOVER	40	125	
N10	25NB	WATER/ COND. OUT	FLANGED	40	125	2Nos.
N11	25NB	WATER INLET	FLANGED	40	125	
N12	25NB	STEAM INLET	FLANGED	40	125	
N13	25NB	SAFETY VALVE	BSP	40	125	
N14	15 NB	LEVEL INDICATOR	BSP	40	125	2Nos.



40-NB	150	STD	TYPE
25-NB <td>150</td> <td></td> <td></td>	150		
A-SIZE	D-O/D	E-I/D	T
	t	H	



### GENERAL NOTES :-

1. ALL DIMENSIONS ARE IN MM UNLESS OTHERWISE STATED.
2. ALL FLANGES HOLES WILL BE OFF CENTRE OF VESSEL PRINCIPAL AXIS.
3. ALL INSIDE & OUTSIDE WELD JOINTS TO BE GROUND SMOOTH.
4. ALL BUT WELD SHALL BE CHIPPED BACK TO SOUND METAL & REWELD.
5. ALL INTERNAL SURFACE ELECTRO POLISHED & EXTERNAL SURFACE MAT FINISHED.
6. GMP MODEL CONSISTING OF ALL CONTACT PARTS MADE OF SS316L AND ALL EXTERNAL AND VISIBLE PARTS MADE OF SS304.

GROSS CAPACITY - 3400 Lts.  
 WORKING CAPACITY - 3000 Lts.

### DESIGN DATA

	SHELL	JACKET
WORKING PRESSURE	1 KG.	1 KG.
DESIGN PRESSURE	1 KG.	1 KG.
HYDROTEST PRESSURE	1.5 KG.	1.5 KG.
DESIGN TEMPERATURE	100°C	100°C
OPERATING TEMP.	85°C	140°C
JOINT EFFICIENCY	0.7	0.7
RADIOGRAPHY		

### ASHISH ENGINEERING

No.	Description	Qty.	Matl.	Size & Remark
16	Header	3Nos	SS304	
15	Exiting Beam	1No	SS304	
14	Home Plate Bracket	2Nos	SS304	
13	Lifting Lug	2Nos	SS304	
12	Manhole	1No	SS316L/400	
11	Base Plate	4Nos	SS304	10THK, Flatx150
10	Pod Plate	4Nos	SS304	10THK, Flatx150x300Lg.
9	Lug support pipe	4Nos	SS304	80NB, Std. 10' spec. 1010Lg.
8	Cone	1No	SS304	2THK, Frise
7	Dished End(Gasket)	1No	SS304	2THK, Product 77054
6	Shell (Gasket)	1No	SS304	2THK, Product 250x4875Lg.
5	Cone	1No	SS304	4THK, Frise
4	Dished End(Gasket)	1No	SS304	4THK, Product 15404
3	Small (Gasket)	1No	SS304	4THK, Product 15404
2	Dished End	2Nos	SS316L	4THK, Product 14304
1	Shell	1No	SS316L	4THK, Product 1500x4095Lg.

### CLIENT

SCALE	1:10
DWG. BY	DASHAM
CHKD. BY	
APPD. BY	
DATE	

### PROJECT

P.W. WATER TANK  
 (Cap: 3000Lts.)

DWG. No. AE-DM-0013